

SECTION 36
TOWNSHIP 80 NORTH RANGE 2 EAST
OF THE FIFTH PRINCIPAL MERIDIAN
ALLENS GROVE TOWNSHIP
SCOTT COUNTY, IOWA

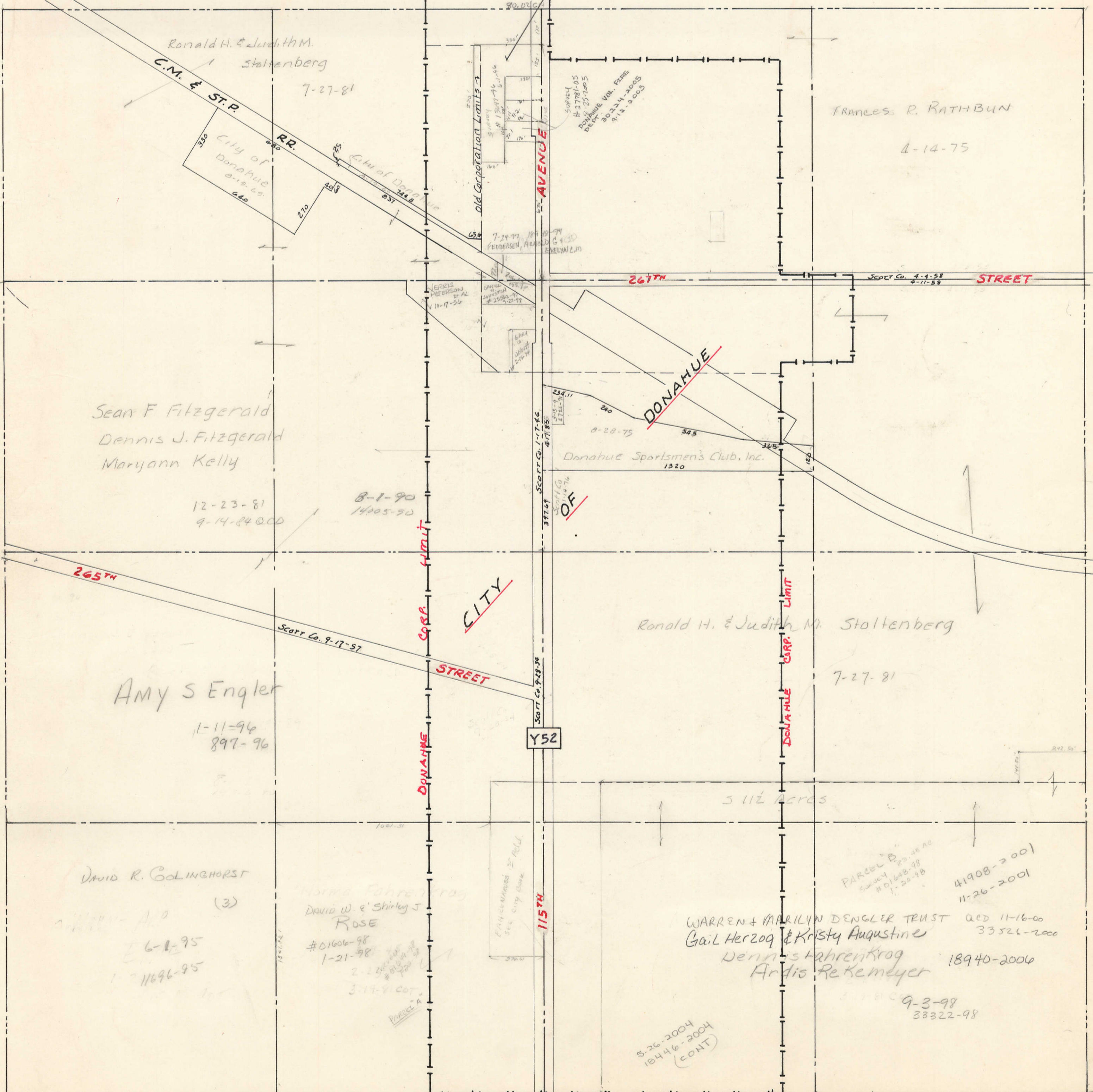


SCALE: 1 inch = 330 feet

TRANSFER PAGE 51ds-31

SECTION 25 PAGE 25

LARRY D & MARY
O ET AL
38784-2005
11-28-2005



SECTION 35 PAGE 35

SECTION 31 PAGE 31 WINFIELD TOWNSHIP